

Vision Care 4Life Patient Education Sheet



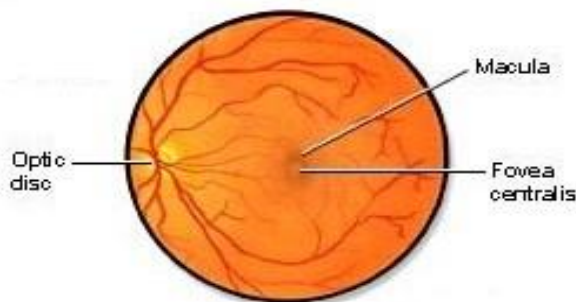
Any questions?
Call us today at:
316-682-9891

www.visioncare4life.com

Macular Degeneration

Macular degeneration is an eye disorder that makes it difficult to see fine details. The condition affects the macula, the part of the retina responsible for central vision. Loss of central vision may interfere with many daily activities such as reading, working on the computer or driving. You may need extra light or magnification to perform many of your normal activities. The best preventative measures for this disorder are not smoking, eating a healthy diet, exercise, daily eye vitamins and daily checks with an Amsler grid. It is also very important that you get follow-up care as recommended by your eye doctor.

Normal Retina



Macular Degeneration



